



Photo credit: Brad Makatoa



2024

Secondary School Sport Auckland Tournament Week

Welcome

**WELCOME
TO AUCKLAND**



**Tātaki
Auckland
Unlimited**



Contents

ABOUT TĀTAKI AUCKLAND UNLIMITED	04
TOURNAMENT WEEK COMPETITIONS	06
ACTIVITY DISCOUNTS	08
ACCOMMODATION DISCOUNTS	09
CALENDAR OF EVENTS	10
WELCOME DINNER	12
TRANSPORT INFORMATION	15
MEDICAL CONTACTS	15
CULTURE OF AUCKLAND	16
EAT, DRINK, SHOP	18
THINGS TO DO IN AUCKLAND	22

About Tātaki Auckland Unlimited

Welcome to Tāmaki Makaurau! Tātaki Auckland Unlimited and New Zealand Sports Collective are excited to bring the Secondary Schools Auckland Sport Tournament Week to Tāmaki Makaurau.

Tātaki Auckland Unlimited is Auckland's economic and cultural agency committed to making our region a desirable place to live, work, visit, invest and do business. As an Auckland Council-controlled organisation, we deliver a coordinated, region-wide programme to maximise cultural, social and economic benefits for our residents and visitors. Driving investment and innovation, we support Auckland businesses to thrive.

Waddell and the School Sport Series is a groundbreaking collaboration between more than 30 sports and includes National Sporting Organisations and event organisers which have come together to achieve greater funding, participation and social outcomes than they could achieve individually.

We are delighted that you have chosen Tāmaki Makaurau as your host city for this event and wish you all the best for your sporting events!

While you are visiting, make sure to check out some of the awesome things to do in Auckland to get the most out of your stay!

Good luck with the training and competition and we hope you enjoy your time in Tāmaki Makaurau!

Ngā mihi,

Tātaki Auckland Unlimited and Waddell



DESTINATION CONTENT

@VisitAuckland

#visitauckland



EVENT CONTENT

@WhatsoninAKL

#visitauckland



@Auckland_NZ

#visitauckland



@VisitAuckland

#visitauckland

Tāmaki Makaurau Auckland!

Tāmaki Makaurau Auckland is Aotearoa New Zealand's largest city, a thriving region of urban sophistication, surrounded by sparkling waters and lush landscapes.

Phenomenal dining, world-class shopping, luxury accommodation and a vibrant entertainment and music scene make for a special city experience, within easy reach of an array of islands and volcanic cones, verdant native forests, hiking trails and spectacular parks and beaches.

Our contemporary Māori culture beats at our heart, and our bustling cultural experiences, sporting events and year-round arts, music and entertainment scene, exist in harmony with our spectacular natural environment. Whether you're an outdoor enthusiast, city sophisticate, culture vulture or nature lover – you'll be spoilt for choice in the beautiful place we call home.

We warmly welcome you to experience and discover Tāmaki Makaurau Auckland. Connect with our people, our land, and the stories that have shaped our place.



Competition

Competition One:

Who is Your Biggest Supporter – 3 Prizes for 3 lucky winners!

Enter on [Facebook here](#) or [Instagram here](#).

Prizes:

1x Wētā Workshop Unleashed Family Pass +
\$20 The Coffee Club Voucher

1x All Black Experience Family Pass + \$20 The
Coffee Club Voucher

1x Vector Wero Water Park Double Passes +
\$20 The Coffee Club Voucher

How to Enter:

1. Follow @visitauckland and @waddell.nz on Facebook and/or Instagram
2. Find the Waddell [Facebook here](#) or [Instagram here](#) - all detail will be here.
3. Mention/ tag your support crew/ family or friends and why they are your biggest supporter (be sure to mention what sport and school they are supporting)
4. Winner drawn on Sunday 25th Aug at 5pm.

T&C's: Must be a supporter of a student attending the 2024 TAU Winter Sport Tournament Week.



Competition Two

Out and about in Auckland:

Prizes:

Team: Team supply of Hydro Flask Drink Bottles

Individual: Sky Jump (AJ Hackett)

How it Works:

1. Follow @visitauckland and @waddell.nz on Facebook and/or Instagram.
2. With your team (team prize) or by yourself (individual prize) get out and about in Auckland and take a photo of your team/by yourself (ideas below).
3. Post or send your photo. Post your photo on Facebook and/or Instagram and tag @waddell.nz @visitauckland and @hydroflask or email through to lucie@waddell.nz
4. One entry per person (per competition). However, each member of your team can enter the same team photo as their own entry.
5. Waddell will select a winner for both competitions on Sunday 8th Sept at 5pm.



ions

Photo Ideas:

1. In a park/green space (with sign of park if possible)
2. With Sky Tower in the background (can be distant)
3. At the top of one of Auckland volcanos
4. Sunset/sunrise
5. At a beach, lake, or river



Hydro Flask

<https://www.hydroflask.co.nz/>

We make thoughtful, beautifully designed gear that moves people. Towards nature. Towards happy. And together each other. Because life is an adventure and we're glad to be with you for every step, sip, and smile along the way. Come on. Let's go!

Competition Three:

Tournament Dinner Quiz

This competition will be run in real time for those who attend one of the welcome dinners at NZMA. The MC will explain how this works and how the winners are determined.

We will have a range of prizes for the quiz on each night. Prizes differ per night but include vouchers for; All Blacks Experience, The Coffee Club, Wētā Workshop Unleashed and Stardome Observatory and Planetarium.



Auckland Activity Discounts



All Black Experience[☆]

20% off with promo-code: NZSC20

45 minute guided tour - learn what it takes to make, shape and be an All Black. 20% off Adult tickets and Family passes (not inc student, senior or child). Valid 30th August - 10th September 2024 (excl 8/09). Online bookings only.



Wētā Work Shop Unleashed[☆]

20% off with promo-code: TWEEK24

A global award-winning movie-making tour. Intro to special effects creative workshop and intro to world building creative workshop. Valid 30th August - 9th September 2024. Purchase now online or in-store.



Tree Adventures

20% Off with promo-code: TAU20

Tree Adventures is a high-wire adventure park set amount the Woodhill Forest treetops. Each course has a series of fun and challenging obstacles that wind their way through the trees. Valid 31st of August - 15th September 2024.



Rainbows End

over 30% off

\$47 pass for high school students (normally \$69.99) when you book a school group (min of 10 students - 1 teacher/ helper will receive riding pass at same price or spectator pass for free)

Auckland Accommodation Discounts

Auckland accommodation for your team or come support your rangatahi with these great offerings. Extend your stay and make a weekend of it!



SkyCity Hotels

10% off with online sign-up.



VR GROUP
HOTELS & RESORTS

VR Group Hotels

10% off with promo-code: TATAKI24

[The Quadrant Hotel & Suites, CBD \(4+ Star\)](#)

[VR Queen Street Hotel, CBD](#)

[Ascotia off Queen, CBD](#)

[VR Auckland City, CBD](#)

[Airport Gateway Hotel, Mangere](#)

[VR Auckland Airport, Mangere](#)

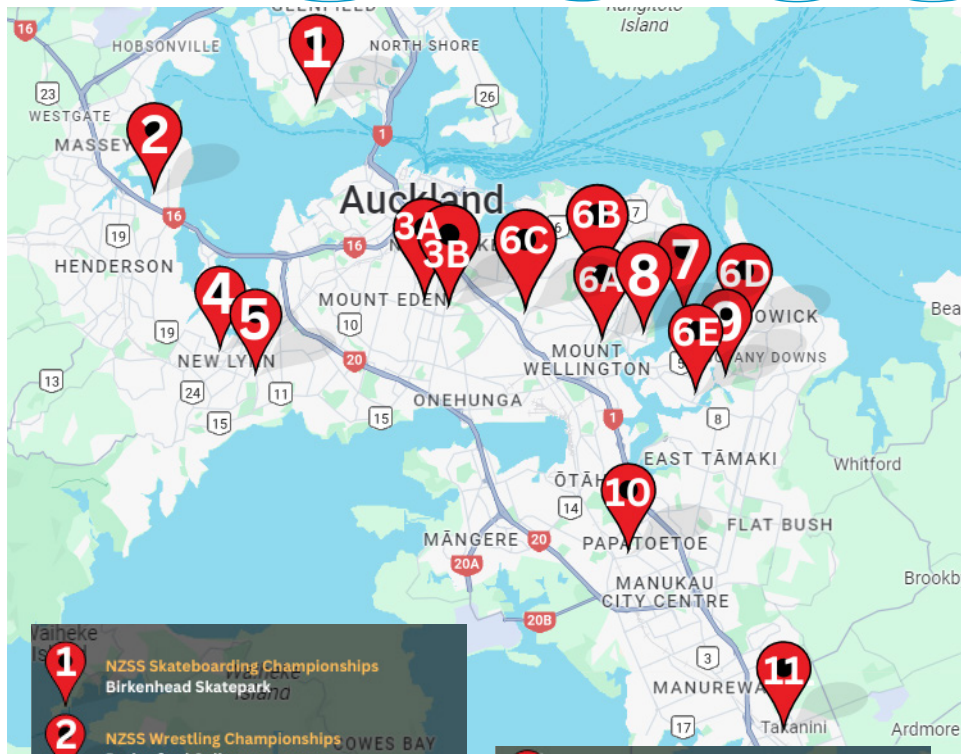
[Airport Kiwi Hotel, Mangere](#)

[Airport Kiwi Motel, Mangere](#)



Terms: All payments made via debit/ credit is subject to an additional 2.5% surcharge. Any cancellation and/ or modifications to a confirmed reservation, within 72hrs of arrival day will be subject to 100% cancellation costs and be fully non-refundable. Any cancellation and/ or modifications prior to 72hrs of arrival will be at no cost, but subject to availability and possible change in dynamic rates based on the rates on day of change request. Group bookings, contact chosen VR Group Hotel/ Motel directly with numbers in the team, along with bedding configuration - net rate provided for these bookings.

Event locations



- 1** NZSS Skateboarding Championships
Birkenhead Skatepark
- 2** NZSS Wrestling Championships
Rutherford College
- 3** NZSS Croquet Championships
2A. Epsom Remuera Croquet Club &
2B. Carlton Croquet Club
- 4** NZSS Indoor Bowls Championships -
Singles and Pairs
New Lynn Portage Bowls Centre
- 5** UNISS Netball Tournament
Waitakere Netball Centre
- 6** NZSS Football Boys Premier Tournament
6A. Bill McKinley Park,
6B. Ngahue Reserve,
6C. Michaels Avenue Reserve,
6D. William Green Domain
6E. Riverhills Park

- 7** NZSS Athletics Road Race Championship
Pakuranga Sailing Club
- 8** NZSS Individual Cycling Championships -
Northern Tour
Dunkirk Road, Mount Wellington
- 9** Upper North Island Boys Mayhill Cup
Lloyd Elmore Park
- 10** NZSS Weightlifting Championships
Kolmar Centre, Papatoetoe
- 11** NZSS Basketball Junior Zone 1 Premierships
NZSS Basketball Zone 1 Premierships
Bruce Pulman Arena

ations

#	Event	Date	Location
1	Basketball – 2 Events 1. Junior Premiership Zone 1 (Secondary Schools Premier & A Grade available) 2. AA Premierships Zone 1 (Secondary Schools Nationals Qualifier)	31 August – 3rd September 4th – 7th September	Pulman Arena
2	NZSS Croquet Championships	2nd – 3rd September	Epsom Remuera Croquet Club Carlton Croquet Club
3	NZSS Football Boys Premiere Tournament	2nd – 6th September	Ngahue Reserve, Michaels Avenue Reserve, Bill McKinlay, Riverhills Park and William Green Domain.
4	Upper North Island Boys Mayhill Cup	2nd – 6th September	Auckland Hockey Stadium, Lloyd Elsmore Park, Pakuranga
5	UNISS Netball	2nd – 7th September	Waitakere Netball Centre
6	NZSS Skateboarding Championships	3rd – 4th September	Birkenhead Skatepark
7	NZSS Athletics Road Race Championships	5th – 6th September	Pakuranga Sailing Club
8	NZSS Indoor Bowls Championships - Singles & Pairs	5th – 6th September	Western Hall, New Lynn
9	NZSS Wrestling Championships	6th September	Rutherford College
10	NZSS Weightlifting Championships	7th – 8th September	Kolmar Centre, Papatoetoe
11	NZSS Individual Cycling Championships - Northern Tour	7th – 8th September	Saturday – Dunkirk Road and Maungarei Memorial Drive, Mount Wellington Sunday – Waiouru Road, East Tāmaki



Welcome Dinners

Welcome Dinners hosted by NZMA



We are pleased to announce that thanks to Tātaki Auckland Unlimited and NZMA, two free dinner functions are being held to welcome participating students to Tāmaki Makaurau (note students and coaches/managers only). This is an awesome opportunity for the students to come together to celebrate winter tournament week, meet other sporting students from all over Aotearoa, listen to a panel of sporting legends and share some kai. These dinners are kindly sponsored by NZMA and crafted by The Culinary Collective students and teachers.

NZMA is a Category One PTE offering vocational education and training in Trades, Hospitality, Cookery, Early Childhood Education, Pharmacy, Pre-Nursing, Horticulture, Sports, Personal Training & Esports. NZMA has 9 campuses across New Zealand. NZMA and The Culinary Collective form part of UP Education – New Zealand's leading independent tertiary education group.

The dinners will be held on Tuesday 3rd and Wednesday 4th September from 6pm – 8pm at NZMA Sylvia Park, 56/60 Carbine Road, Mount Wellington. Spaces are limited so secure your spot by RSVPing with [this form](#) or email luacie@waddell.nz if you have any questions.

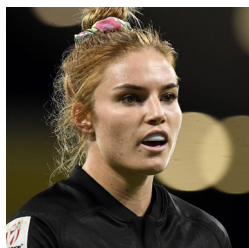
Athletes

We're excited to announce that we will have two Olympic gold medallists joining our super star sporting panel on both nights as well as some other outstanding sporting legends from the Stars Netball Team.



Mike Brake

Mike Brake, from Ngati Porou, is a New Zealand rower who won a gold medal in the Men's Eight at the Tokyo 2021 Olympics and competed in the Rio 2016 Games. His career began with a win at the 2012 World Rowing Junior Championships while at Westlake Boys High School. Michael has represented New Zealand at six open World Championships. Currently, he balances sport with a career in engineering and recently returned from a three-month rowing trip in Japan with the Toyota rowing team.



Michaela Blyde

Michaela Blyde is a New Zealand rugby sevens player with two gold medals – one from the Tokyo 2021 Olympics and one from the Paris 2024 Olympics. She has competed in two Commonwealth Games, winning gold and bronze, and has been part of two World Cup-winning teams. Michaela has been named World Rugby Sevens Player of the Year twice. She has a passion for the police, is involved in Sky Sport media work, and has a Labrador pup named Honey.

Dinner One:

Date: Tuesday 3rd September

Time: 6pm – 8pm

Location:

NZMA Sylvia Park Campus, 56/60 Carbine Road, Mount Wellington, Auckland 1060

Dinner Two:

Date: Wednesday 4th September

Time: 6pm – 8pm

Location:

NZMA Sylvia Park Campus, 56/60 Carbine Road, Mount Wellington, Auckland 1060

Apologies for those who missed out but the both dinners have reached capacity.



**FREE
STUDY
OPTIONS***

MOVE AHEAD IN...



Animal Care

Bakery

Business

Cookery

Early Childhood Education

Esports

Health

Horticulture

Hospitality

Personal Training

Pharmacy

Pre-Police

Sport

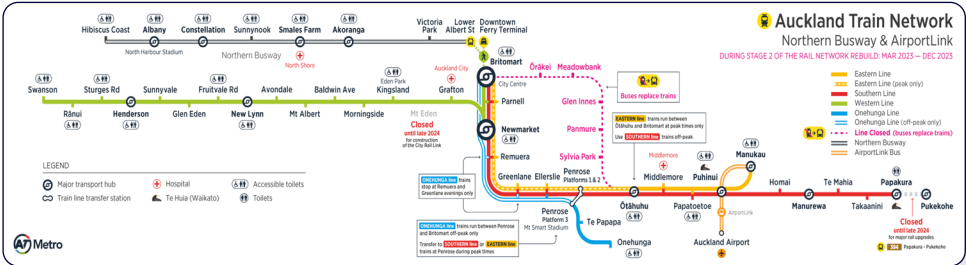
Trades

Learn to move ahead at nzma.ac.nz

*Free study terms and conditions apply.
See details at nzma.ac.nz

AUCKLAND TRANSPORT

Train Map



Journey Planner

Travel anywhere and everywhere in Auckland with AT HOP for **just \$20**

AT website | at.govt.nz

Hop Card Registration | at.govt.nz/bus-train-ferry/at-hop-card/register-at-hop-card/

Concessions:

Under 25 and full-time tertiary students: Tertiary concession.

Ages 5-15: Child fare and free weekend travel.

Ages 16-19: Secondary concession for Auckland schools.

<https://at.govt.nz/bus-train-ferry/at-hop-card/card-concessions-discount-fares>

Medical Contacts

Emergency: **Dial 111**

Healthline: **0800 611 116**

Each event location will have designated first aiders. Contact your tournament director for assistance.

Culture

THE CULTURE OF AUCKLAND



Tāmaki Makaurau Iwi

Auckland was first settled by the Māori people in approximately 1350. The Māori constructed terraced pa (fortified villages) on the volcanic peaks of the area then known as Tāmaki Makau Rau.

Tāmaki Makaurau has been home to a number of iwi (tribes), Auckland Council recognises 19 iwi authorities;

Ngāti Whātua Ōrākei, Ngāti Wai, Ngāti Manuhiri, Ngāti Rehua Ngāti Wai ki Aotea, Te Rūnanga o Ngāti Whātua, Te Uri o Hau, Ngāti Whātua o Kaipara, Te Kawerau ā Maki, Ngāti Tamaoho, Te Ākitai Waiohū, Ngāi Tai ki Tāmaki, Ngāti Te Ata Waiohū, Te Ahiwaru Waiohū, Waikato-Tainui, Ngāti Paoa, Ngāti Whanaunga, Ngāti Maru, Ngāti Tamaterā

Māori Culture

Sport is an area where Māori thrive – Māori rangatahi between 5-17 years old have the highest participation rate in competitive physical activity of all core Aotearoa ethnicities (European, Māori, Pacific and Asian). Increasingly, the emergence of Te Reo Māori is being seen and used by teams and sports.

Noting that the upcoming years see a particular focus on intergenerational transmission, revitalisation in immersion settings. With the goal that this will result in strengthened identity, connection and wellbeing through the use and growth of the Māori language.

Eat, drink

SOUTH AUCKLAND

The Coffee Club

All-day breakfast & café lunches plus signature coffee blends

Manukau Supa Centre | 8am-5.30pm (Mon-Fri), 9am-5pm (Sat-Sun)

Takanini Village | 7.30am-5.30pm (Mon-Sat), 8am-5pm (Sun)

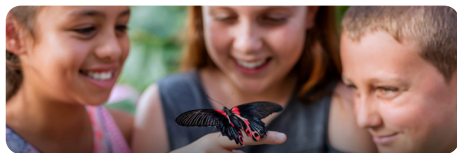
Westfield Manukau City | 8am-6pm (Mon-Wed, Sat), 8am-9pm (Thur-Fri), 9am-6pm (Sun)

Lone Star – Manukau

Best restaurant in Manukau, making you feel right at home.

Open 7 day | Dine in or Takeaway | (09)985 0590

4pm-9pm (Mon-Fri), 12pm-9pm (Sat-Sun)



Butterfly Creek Café

Serves fresh homemade food. Inside deck and outdoor court yard right next to the free children's playground. 9.30am-4pm (Wed-Fri), 9.30am-5pm (Sat-Sun)
10 Tom Pearce Drive, Auckland Airport

Café Miko

Auckland Botanic Gardens Manurewa

Enjoy a well deserved coffee after a stroll around the Gardens | (09) 269 3407
8am-3pm (Mon-Fri), 8am-4pm (Sat-Sun)



Moustache Milk And Cookie Bar Manukau

Moustache has something for the Cookie Monster in everyone
10am-6pm (Mon-Tue), 10am-9.30pm (Wed-Sat), 10am-5pm (Sun) | 40 Cavendish Drive
Manukau

Percy Café And Eatery Mangere

A fresh and modern eatery offering the very best of Auckland cuisine with a focus on local ingredients.

2 Te Kapa Drive | 7am-2.30pm (Mon-Fri), 8am-3pm (Sat), 9am-3pm (Sun) |
(09) 600 6606

For more things to see and do in Auckland, head to aucklandnz.com

E & shop

EAST AUCKLAND

The Coffee Club

All-day breakfast & café lunches plus signature coffee blends

Highland Park | 7.30am-4.30pm (Mon-Fri)
8am-4.30pm (Sat-Sun)

Sylvia Park | Open 7 days | 8.30am-7pm

Botany Junction | Open 7 days | 8am-7pm

Better Burger - Sylvia Park

Open 7 days | 10am-9.30pm

Little District Market Square Kitchen - Sylvia Park

All-day eatery, combining fresh produce with their wood fired oven
12pm-8.30pm (Mon-Fri) 12pm-9pm (Sat-Sun)

Lone Star - East Tāmaki

Family dining | café | steak house
Open 7 days | 12pm -late | Botany Town Centre

Grangers

In the heart of Half Moon Bay Marina, a local place where you can drop in for a quick bite, a special celebration with friends or a Sunday lunch.
Open 7 days | 12pm-Late | 1 Ara-Tai Road

CENTRAL AUCKLAND

Little Rosie - Parnell

Coffee, Food, Art
Open 7 days | 6.30am-4pm | 76 Gladstone Rd

The Coffee Club

All-day breakfast & café lunches plus signature coffee blends

Mission Bay | Open 7 days | 7am-8pm | Tāmaki Dr

Lunn Avenue | 7.30am-5pm (Mon-Fri) 8am-6pm (Sat-Sun)

Stoddard Road | 7.30am-5pm (Mon-Fri),
8am-5pm (Sat-Sun)

Moustache Milk And Cookie Bar Remuera

Moustache has something for the Cookie Monster in everyone
Open 7 days | 10am-5pm | Orakei Bay Village

Lone Star - Alexandra Park

Family dining | café | steak house
Open 7 day | Dine in or Takeaway | 11.30am-late
223 Green Lane West, Epsom

Cornwall Park Café - Epsom

Nestled in amongst the ever beautiful Cornwall Park
Open 7 days | 7.30am-5pm | (09) 630 2888
Cornwall Park, Pohutakawa Drive, Epsom

For more things to see and do in Auckland, head to aucklandnz.com

CBD**Orbit 360 Dining – Sky Tower**

Corner of Federal & Victoria Street CBD
Soaring high above Auckland you'll discover Orbit, offering sensational views and food to match.

Dinner Daily 5pm–1–pm | Lunch (Sat–Sun)
11.30am–3pm | (09) 363 6000

Fat Puku's Smashed Burgers – Queen St

American classic burger, right here in Aotearoa
9.30pm–9pm (Mon), 12pm–9pm (Wed–Sun)

Best Ugly Bagels – Newmarket

Montreal-style bagels, with unique style and flavour
Open 7 days | 8am–3pm | 3a York Street

The Coffee Club

All-day breakfast & café lunches plus signature coffee blends

Victoria St | Open 7 days | 7am–5pm

Wyndham St | Open 7 days | 6.30am–4pm

High St | 7am–5pm (Mon–Fri), 8am–5pm (Sat–Sun)

Customs St | 7am–6pm (Mon–Fri), 8am–6pm (Sat–Sun)

Lone Star Café & Bar – Queen St

Family dining | café | steak house
2PM–Late (Mon–Tue), 12–late (Wed–Sun)

WEST AUCKLAND**Pizza Landing – Te Atatu**

Traditional | Gourmet | Gluten-Free | Dairy-Free | Vegan
4pm–8.30pm (Sun, Tue–Wed), 4pm–9pm (Thur–Sat)

The Coffee Club

All-day breakfast & café lunches plus signature coffee blends

West City | 8.30am–6pm (Mon–Wed, Sat),

8.30am–9pm (Thur–Fri), 9am–5.30pm (Sun) |

Westfield St Lukes | 8.30am–6pm (Mon–Sat),
9.30am–5.30pm (Sun)

Humbug Café – Glen Eden

Breakfast and brunch as well as great coffee
7am–3pm (Mon–Fri), 8am–3pm (Sat–Sun)
32 Rua Road, Glen Eden

Mt Atkinson Coffee Shop – New Lynn

Committed to serving you the best brew in the west along with tasty good food for breakfast and lunch
7am–3.30pm (Mon–Fri) | 44b Portage Road

The Grounds – Henderson

Aucklands first modern family eatery nestled amongst five acres of lush urban park.
Open 4 days a week | 9am–9pm
8/14 Henderson Valley Rd | Whoa! Studios

Lone Star Café & Bar – Westgate

Family dining | café | steak house
5pm–Late (Mon–Thur), 4.30pm–Late (Fri),
12pm–Late (Sat–Sun) | 575 Don Buck Road

For more things to see and do in Auckland, head to aucklandnz.com

SHOPPING

Onehunga Dress Smart

New Zealand's largest outlet shopping destination.

9am-5pm (Mon-Fri), 9am-6pm (Sat-Sun)
151 Arthur Street, Onehunga | Free Parking

Sylvia Park

New Zealand's largest mall, best brands and stores, located in the heart of Auckland.

Open 7 days | 9am-7pm | Free Parking

Hoyts Cinemas

Open 7 days | 9.45am-11.30pm
286 Mount Wellington Highway, Mount Wellington

Manukau Supa Centre

Your home for shopping | Manukau City Centre

Open 7 days | 9am-5.30pm (Mon-Wed, Fri-Sat), 9am-8pm (Thur), 10am-5pm (Sun)

West City Waitakere

Major regional shopping centre located in Henderson.

9am - 6pm | 7 Catherine Street, Henderson

Britomart Shopping Centre

Major rail & bus station featuring retail boutiques, restaurants & a Saturday farmers market.

3 Maritime Building, 130 Quay Street, CBD

Botany Town Centre

Large shopping mall and lifestyle centre.

9am-6pm | 588 Chapel Road, East Tāmaki

Westcity Waitakere Mall

Relaxed community shopping and entertainment in the heart of West Auckland.

9am-6pm (Mon-Fri), 10am-5.30pm (Sun)

Event Cinemas

Open 7 days | 11am-10.30pm
Free Parking | 7 Catherine Street, Henderson

Commercial Bay

Auckland City's newest precinct for shopping, dining and fun. Located on the Auckland waterfront.

Open 7 days | 10am-6pm (Mon-Wed), 10am-7pm (Thur-Sat), 10am-5pm (Sun)
7 Queen Street, CBD

Westfield

St Lukes - 9am-6pm (Mon-Wed, Sat), 9am-9pm (Thur-Fri), 10am-5.30pm (Sun) | 80 St Lukes Road, Mount Albert

Newmarket - 9am-7pm (Mon-Wed, Sat), 9am-9pm (Thur-Fri), 10am-7pm (Sun) | 277 Broadway

Manukau - 9am - 6pm (Mon - Wed, Sat), 9am - 9pm (Thur - Fri), 10am - 5.30pm (Sun) | Cnr Great South Road & Manukau Station Road

Albany - 9am-6pm (Mon-Wed, Sat), 9am-9pm (Thur-Fri), 10am-5.30pm (Sun) | 219 Don McKinnon Drive, Albany

For more things to see and do in Auckland, head to aucklandnz.com

THINGS TO DO IN AUCKLAND

While you're in town, take the chance to explore all the region has to offer. With so many experiences so close, it's easy to hop from one adventure to the next. Auckland offers an unbeatable combination of city style and an amazing natural playground

Sky Tower, SkyJump & SkyWalk

The 328m Sky Tower is an icon of Auckland's skyline. If taking in the panoramic 360 degree views across the greater Auckland area isn't enough, try one of the more adrenaline filled activities

Sky Tower Entry: Child from \$18 | Adult from \$37 | Family from \$90 Open 7 days | 9.30am-8pm | CBD

SkyWalk

SkyWalk has visitors on their toes walking around the perimeter of the Auckland Sky Tower standing 192 meters above Auckland City.

From \$160 | 10am-5pm | Open 7 days | 10yrs+



AJ Hackett Sky Jump

It's the ultimate leap of faith – a jump from NZ's highest building with nothing but a wire between you and the ground 192m down! Skyjump gives you 11 seconds of pure adrenaline as you plunge 53 floors down at a speed of 85kph. You'll feel like a total boss when you stick the landing in SKYCITY plaza.

www.skycityauckland.co.nz/sky-tower/

Rainbows End

It's fun for all ages at Rainbow's End! Whether you are on the hunt for pure adrenaline or magical moments, fans of thrilling fun will be right at home at Rainbows End.

Fri-Mon | 10am-4pm | Manukau

Special Offer For Tournament Week:

14yrs+ \$47 | 2-13yr \$42 (Min of 10ppl)

Valid 4/08/23-17/09/23

Quote: Secondary Schools Sport Winter

Tournament to aroha@rainbowsend.co.nz



www.rainbowsend.co.nz

Auckland War Museum

One of Aotearoa's New Zealand's first museums, Tāmaki Paenga Hira Auckland Museum tells the story of NZ, its place in the Pacific and its people. Open 7 days | 10am-5pm Mon-Fri 9am-5pm Sat-Sun Child \$14 | Adult \$28 | Family \$70

Māori Cultural Performance (Auckland Museum)

Experience a vibrant glimpse of Maori culture in an engaging performance.

11.15am & 1.45pm daily | Child \$15 | Adult \$30 | Family \$80 (additional to general admission tickets)

www.aucklandmuseum.com/visit/culture

For more things to see and do in Auckland, head to aucklandnz.com

Things to do

Auckland Zoo

Auckland Zoo is home to over 1400 animals across 135 species, making it New Zealand's largest home for animals and it's just minutes from Central Auckland.

Child \$13 | Student (I.D required) \$19 | Adult \$24
Open 7 days | 9.30am-4pm | Western Springs

www.aucklandzoo.co.nz | Ph: 093603805



Butterfly Creek

Get up close with fabulous animals and entertaining attractions. Immerse yourself in our tropical butterfly house and feel the brush of fluttering butterflies. Let your eyes adjust and see magnificent Kiwi roaming in Kiwi Forest.

Child \$16 | Student \$24 | Adult \$29 | Family Pass \$83

Open Wed-Sun | 9.30am-4pm | Auckland Airport

www.butterflycreek.co.nz | Ph: 092758880

Auckland Whale and Dolphin Safari

New Zealand's most interactive whale and dolphin watching experience

Child \$109 (14yrs) | Adult \$165 | Family \$399

Open 7 days | 9am-6pm | CBD | Ph: 0508365744

Sea Life Kelly Tarlton's Aquarium

Explore the unique underwater world full of discovery and adventure at Sea Life Kelly Tarlton's Aquarium.

General Admission \$36 | Family Pass from \$116
Open 7 days | 9.30am-5pm | Orakei

www.visitsealife.com/auckland/

Wētā Work Shop Unleashed

Explore interactive and immersive make-believe film sets, focusing on the worlds of horror, fantasy and sci-fi. It's your chance to get up-close and hands-on with enchanting environments, resident creatures, one hyper-realistic giant, a galactic robot, and much more.

The crew will take you on a guided journey through three fully developed and original film concepts: a nail-biting horror, a fantasy epic and a mind-bending sci-fi. We've written the scripts, we've storyboarded the scenes, we've completed the world-building and design. Dive into a world of the imagination as you explore filmmaking up close.

It's the ultimate showcase of creativity, with enchanting environments, discombobulating displays, surprise encounters, resident creatures, one hyper-realistic giant, and a galactic robot.

The experience ends with an out-of-this-world light show and celebration of making. Return to reality, if you must, with your creative aspirations and imagination unleashed.

From \$59 | Ph: 049094035

Open 7 days | 10am-6pm | Auckland City

www.tours.wetaworkshop.com/unleashed/

For more things to see and do in Auckland, head to aucklandnz.com

THINGS TO DO IN AUCKLAND

Th



All Black Experience

45 minute guided tour – learn what it takes to make, shape and be an All Black. 20% off Adult tickets and Family passes (not inc student, senior or child). Valid 30th August – 10th September 2024 (excl 8/09). Online bookings only.

<https://www.experienceallblacks.com>



Tree Adventures

Tree Adventures is a high-wire adventure park set amount the Woodhill Forest treetops. Each course has a series of fun and challenging obstacles that wind their way through the trees. Valid 31st of August – 15th September 2024.

<https://treeadventures.co.nz>

Vector Wero

White Water Rafting, Kayaking, Paddleboarding

Vector Wero Whitewater Park is a world class facility that engages our communities, corporates and youth alike. Our mission is to provide every student with the opportunity to learn about the power of moving water by rafting, river crossing and swimming, all whilst serving as a hub for tourism and recreational fun.

Open 7 days | 8.30am–5pm | Manukau

www.wero.org.nz | Ph: 099135251



Stardome Observatory & Planetarium

Stardome Observatory and Planetarium – movie times & tickets

Welcome to Stardome, the coolest little observatory this side of Neptune. Located in One Tree Hill Domain, Tāmaki Makaurau Auckland, Aotearoa. Sharing our love and mātauranga of all things space since 1967.

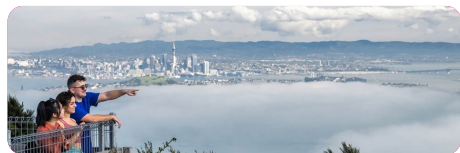
<https://www.stardome.org.nz>

For more things to see and do in Auckland, head to aucklandnz.com

ings to do

Climb Rangitoto Island

Just a 25 minute ferry ride from downtown Auckland, Rangitoto Island is Auckland's youngest volcano. Take the one-hour summit track through lava fields and forest, stop off to explore lava tunnels and caves on the way. The 360 degree views from the summit are incredible, and will provide some instaworthy photos. 2hr Walk | 7km
Ferry return: Child \$25 | Adult \$53 | Family \$114
Fri-Sun | 9am-4pm | Ph: 093769111 | CBD



Be sure to check return ferry timers before heading across www.fullers.co.nz

Auckland Botanic Garden

A spectacular South Pacific Botanical garden in Manurewa, the gardens cover 64 hectares, and holds more than 10,000 plants
Open 7 days | 8am-6pm | Free | 102 Hill Road

Beaches:

Mission Bay

Beautiful waterfront in Auckland, minutes from the CBD, stunning views of Rangitoto and great places to eat, drink and enjoy

Piha

West Auckland Black-sand beach, known for its strong surf and rugged scenery. Lion Rock is a volcanic monolith with war memorials and Māori carvings.

Auckland Volcanic Walks

One Tree Hill/ Maungakiekie

Landmark Volcanic peak, providing panoramic views, as well as memorial statues.

Mount Eden/ Maungawhau

Site of Auckland's highest volcano, with spectacular city and harbour views.



Mount Wellington/ Maungarei

One of the youngest volcanoes in Tāmaki Makaurua, active only 10,000 years ago.

Mount Roskill/ Pukewīwī / Puketāpapa

Scoria cone volcano dated 105,000 years old, short steep climb to see the wonderful views.

Auckland Domain, Parnell

Established city park, containing museums, memorials and the entire blast crater of Pukekawa Volcano.

For more things to see and do in Auckland, head to aucklandnz.com