

**New Zealand Secondary Schools Track and Field & Road Race Championships**  
**Auckland Trust Stadium Waitakere - 2, 3, 4 December 2016**

**Newsletter 2**

23 September 2016

Welcome to our second newsletter.

Work has started on the resurfacing of the track at Trusts Stadium. They are making great progress, as you can see, and will have the project completed by mid November.



**Examinations**

Please refer to Newsletter 1 for advice on what to do should athletes have a clash with examinations on Friday December 2.

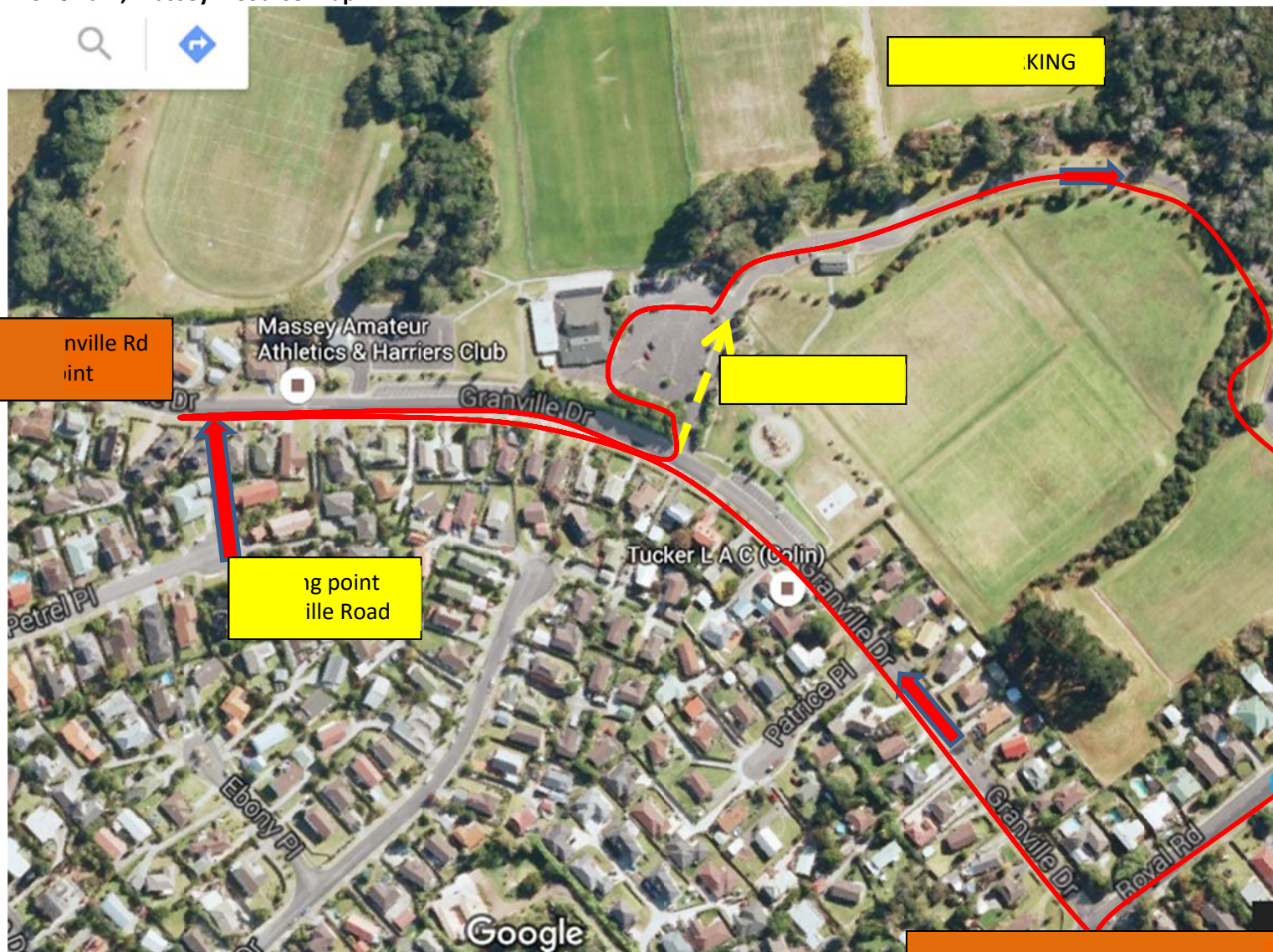
**Timeline**

23 September	Newsletter 2 available on NZSSAA website
10 October	Online entries open
Ongoing	School entries posted on NZSSAA website as received and paid for
7 November	Newsletter 3 available on NZSSAA website

21 November	Final date for entries
29 November	Individual scratchings close
2 December	Manager's packs available at Trusts Stadium Waitakere.
2 December	Managers meeting (if required) /NZSSAA AGM venue and time to be confirmed
2/3/4 December	Track and Field Championships at Trusts Stadium Waitakere
4 December	Road Race Championships, venue to be confirmed

## Road Race

### Moire Park, Massey – Course Map



### COURSE

1] The base loop is 1500 metres approximately. Start dependant the course will run in clockwise direction through the internal road of Moire Park out onto Royal Rd towards Granville Rd. In Granville Rd course proceeds along park front beyond main entrance gate to take in a small out and back loop section along in front of the Massey Athletic club parking and entrance area and turn to return through main park gate circumnavigating sealed carpark area . On finishing lap athletes will run directly into main drive to finish line.

**PARKING - No Parking** would be permitted on southern end of Granville Road **or** western end of Royal Road between Granville Rd and Moire Park entrance gate

### General Information

Moire Park is in quiet residential area of Massey, home of Massey Rugby club and Massey Athletics club . This park area also stages the Auckland SS North west Zone cross Country annually. Access from Waitakere Trust Athletics Stadium, is approximately 4.8 km from Waitakere Stadium either via SH16 motorway or Triangle Rd/Makora Road once you leave Grand View Dr. from the stadium

## Programme

A draft programme is on [nzssaa.org.nz](http://nzssaa.org.nz)

## Entries

All entries must be made online on the NZSSAA website on or before **21 November**. The website will be open for entries from **10 October** and will close on **21 November** at midnight.

## Affiliation

The Association collects school affiliation fees with entries. Schools that did not have competitors at the Cross Country Championships in Rotorua will have the \$36.00 affiliation fee added to their entries invoice.

## Entry Fees

The entry fees payable per athlete for track and field and/or road race are as follows -

\$22.00	One or two events (including the road race)
\$30.00	Three or more events
\$10.00	Relay competitors only

**Do not be late with your entries.** After 21 November further entries will only be added with the approval of the online entries administrator. Late entries will only be accepted **if there has been a genuine error or accepted reason** and if they do not create an extra heat or round or if field event numbers are low enough to allow the event to be completed in the allocated time. There will be a charge of \$10 per late entry and they need to be emailed to [oe@nzssaa.org.nz](mailto:oe@nzssaa.org.nz). **No late entries will be accepted after 12 noon on Thursday 1 December.**

**Entries for all NZSSAA events are to be submitted online. To get started go to [www.nzssaa.org.nz](http://www.nzssaa.org.nz) and launch the online entries site by following the instructions below.**

1	Visit <a href="http://entries.co.nz/o/nzsstfr2016/">http://entries.co.nz/o/nzsstfr2016/</a> under Entry Procedures. This can be found on the home page or by selecting Competitions and then the current championships.
2	A login prompt will be presented to your browser.
3	Enter your assigned username and password to proceed into the system.

*Please remember to fill in your school information first (including a cell phone number for the manager so that they can be contacted at the championships).*

Your entries are complete when you have chosen a payment option, produced an invoice and paid. There are two options for payment. The first is by **school or personal credit card**. The second is by direct crediting the **NZSSAA Entries** bank account **12-3150-0174691-00**. Please note that you can add additional entries yourself up until entries close even though you may have already generated an invoice or paid. Enter your additional athletes and pay for them accordingly.

**Payment by cheque is no longer an option except for a late payment when the cheque is handed directly into the TIC at the championships in order to uplift your competition numbers.**

Please note: Athletes will not appear in the confirmed entries list on the website and will not be able to compete until entry fees have been confirmed as having been paid.

Entry enquiries are to be by email only to [oe@nzssaa.org.nz](mailto:oe@nzssaa.org.nz) please

## Scratchings

Scratchings for single events must be done on the NZSSAA website by midnight **Tuesday 29 November**. After that date any scratchings received will be considered as scratchings from all events.

**NB:** The Road Race and the Track and Field Championships are separate championships and scratching from one after Tuesday does not stop an athlete taking part in the other. Scratchings are not required for the road

race unless the team manager plans to substitute a replacement runner and this can be done right up to the time of the race using the scratchings/replacements form provided to managers.

### **Equipment, Accommodation, Tent Sites**

Please refer to Newsletter1

### **Championship T-Shirts**

Souvenir t-shirts will be available for purchase through the online entry system opening on the 10<sup>th</sup> October and will be available for pickup with the school packs. Please order all t-shirts as one School Order. More information on colour, sizes and cost will be available on the Website prior to entries opening.

### **Para Athletes**

Please check [www.nzssaa.org.nz](http://www.nzssaa.org.nz) for the information on classification. Athletes intending to compete who have not yet been classified must obtain a provisional classification and be available to meet the Paralympics NZ classifiers on the Friday December 2 to confirm their classification.

Peter Booker

LOC Chair

Auckland Track & Field Chairman.