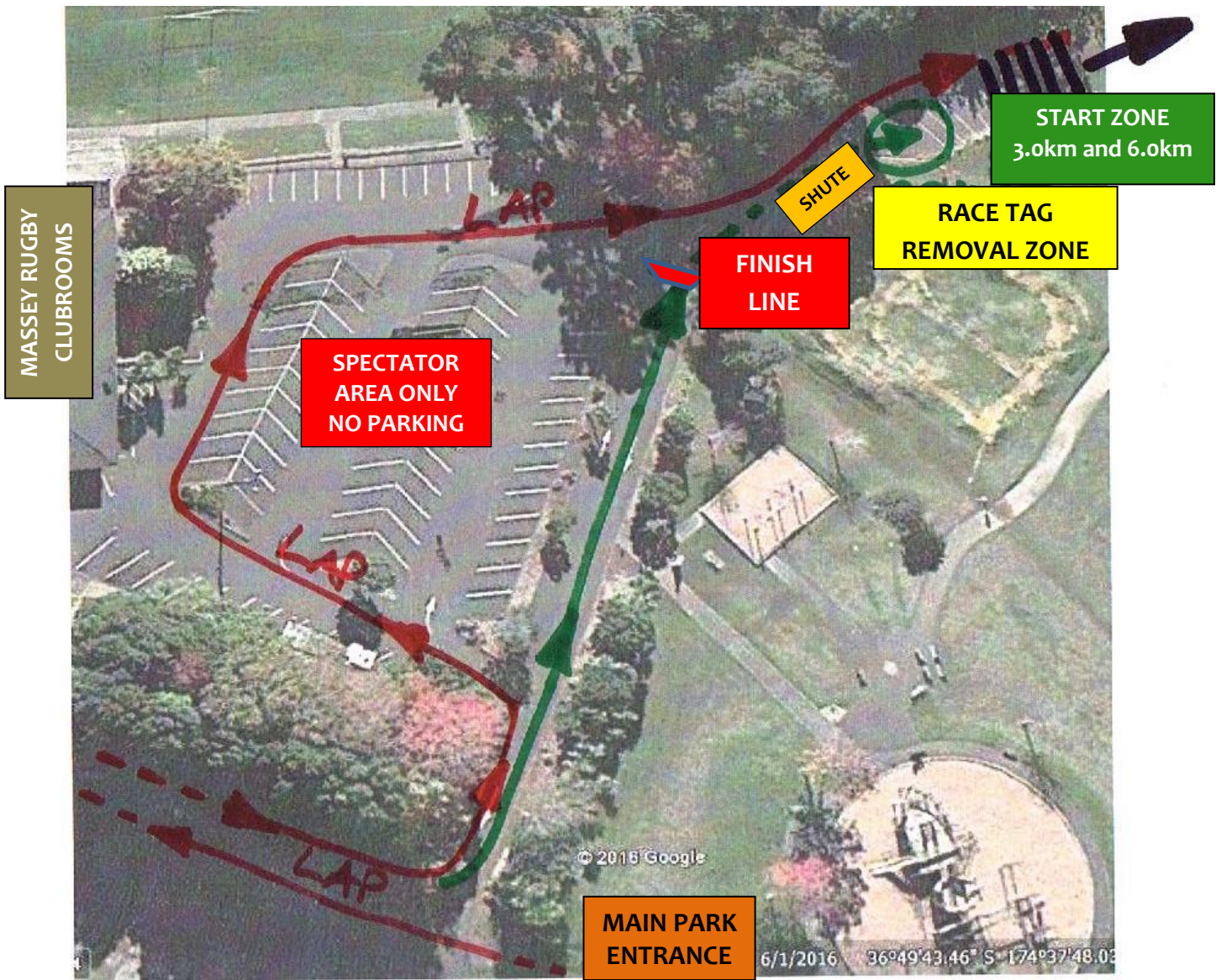


# NZSS ROAD RACE MAPS – Moire Park, Massey

MAP of FINISH AREA for All races; START AREA for 1.5km Loop  
WARM UP will be available on Rugby fields and Massey Athletic Cub ground;  
NO WARM UP will be permitted on the Road course



Massey Athletics Club Parking Area: **Restricted Parking** for Race Officials and Team Vans ONLY by application – Access will only be before 8.00am [1<sup>st</sup> race] and at the conclusion of Senior Boys Race. Please apply to [tony@acesports.co.nz](mailto:tony@acesports.co.nz) . NO Street Parking will be available on Granville Road and Royal Road where the course operates. **Restricted** parking will be available in all surrounding streets.



# NZSS ROAD RACE MAPS – Moire Park, Massey

Map of 4.0 km START on Royal Road Just beside Moire Park Gate

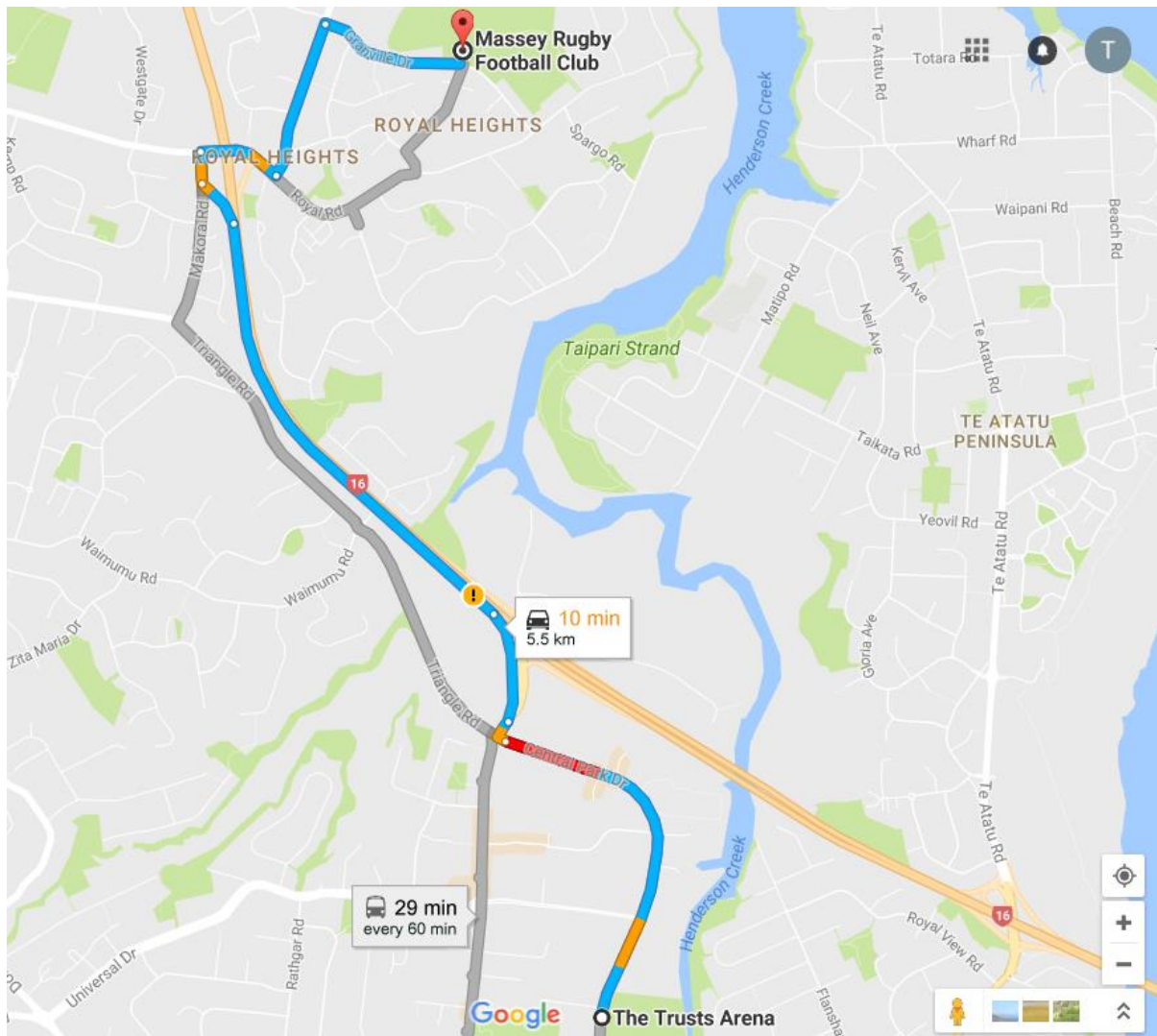


## Road Race Distances and Start Times

- 8.00 am: 3000 m Year 9 Girls**
  - 3000 m Para Athletes - Girls**
- 8.20 am: 3000 m Year 9 Boys**
  - 3000 m Para Athletes - Boys**
- 8.40 am: 4000 m Junior Girls**
- 9.05 am: 4000 m Junior Boys**
- 9.30 am: 4000 m Senior Girls**
- 9.55 am: 6000 m Senior Boys**

# NZSS ROAD RACE MAPS – Moire Park, Massey

## Map of routes from Waitakere Trusts Stadium to Road Course at Moire Park



### Routes to Moire Park

**Option 1** – Blue route from Trust Stadium take Central Park Drive until you arrive at lights on Lincoln Road, Turn right and immediately exit left onto SH 16 North West Motorway until you come to Royal Road exit .Travel up off ramp to Makora Rd and turn right then at next junction right into Royal Road – cross motorway then turn left at Moire Road until Granville Road then turn Right. Park on side of Granville Road before parking restrictions

### Routes to Moire Park

**Option 2** – Blue and Grey route from Trust Stadium take Central Park Drive until you arrive at lights, go straight on Triangle Road until you come to Makora Rd and turn right then at next junction right into Royal Road – cross motorway then turn left at Moire Road until Granville Road then turn Right **OR** Continue on Royal until you meet the course and Park on side of Royal Road outside parking restrictions.