



New Zealand Secondary Schools Athletics Association
41st New Zealand Secondary Schools
Cross Country Championships 2014

Newsletter #2

To All New Zealand Secondary Schools:

Welcome to the 41st New Zealand Secondary Schools Cross Country Championships to be held at the Sport and Rugby Institute at the Palmerston North Campus of Massey University.
Thank you for your entries, this second and final newsletter updates several important points.

Important Notice: All competitors must wear the bib allocated to their start No. at all times during the race and not alter any part of the bib (the bib is a timing chip). Failure to do so will exclude competitors from the results (individual & team). Under no circumstances should teams re-allocate bibs to different competitors. Please contact a member of the technical team if you have a query regarding this.

Course

One major change to the order of laps for the 3km events.
The 3km events will begin with a “short lap” of the Rugby Fields – followed by a full lap.

It is recommended that all runners wear footwear. The course is suitable for spiked or trail running shoes and in extreme conditions soccer boots.

Directions and Parking

Massey University is located on the South Side of the Manawatu River. The only access to the venue on the day of the event is via Massey University campus on Tennent Drive. Please refer to the event map: https://mapsengine.google.com/map/edit?mid=z4mZNEHyQi2A.k61bDjDe_p-8

There is all weather parking for 1,000 vehicles on Albany Drive within walking distance of the course.

Functions

All team managers with participants at the competitor social are required to attend the Managers Function held at the same venue. Pizza & drinks will be made available while the All Blacks vs. England match will be screened live.

Programme of Events

Friday 20 June

1.00pm to 5.00pm Course open for inspection. Please do not come to the course before 1pm, so that the volunteers can concentrate on setting up the course. Note that it may not be in its finished state until late afternoon.

3pm to 5pm Managers Packs will be available in Race Pack Collection area at the race venue. Race Packs will only be issues to Team Managers and not individual athletes.

Saturday 21 June

8.30am Course open for inspection and Team Manager Packs available in the marquee

8.45am – 9.15am Team Managers meeting in the Sport and Rugby Institute

10.00am AWD Combined Disability/ Girls and Boys - 2 km

10.30am Year 9 Girls – 3km

11.00am Year 9 Boys – 3km

11.30am Junior Girls – 3km

12 noon Junior Boys – 4km

12.30pm Senior Girls – 4km

1.00pm Senior Boys – 6km

4.00pm **Prize Giving** at the Massey Event Centre adjacent to the Rec. Centre

7.00-10.00pm Athletes Disco & Managers Function. Both events will take place at the Massey University Events Centre (refer to the event map).

N.B. Races will **only** commence once the previous race has been completed. Athletes must report to the Start area five minutes prior to scheduled Start. **The starter will not hold an event for teams not at the start on time.**

T shirts

T shirts are available for purchase using the order form on the website:

<http://nzssaa.org.nz/static/nz-xc-2014/t-shirt-order-form.pdf>

Food and Refreshments

Coffee and food will be available on the course, including eftpos facilities.

Check the NZSSAA website (<http://nzssaa.org.nz>) or event Facebook (<https://www.facebook.com/events/134145526760624/>) for further announcements

We look forward to welcoming you to Massey University and Palmerston North for this exciting event and hope that you all have an enjoyable and rewarding time.

If you do have any entry queries, please email oe@nzssaa.org.nz

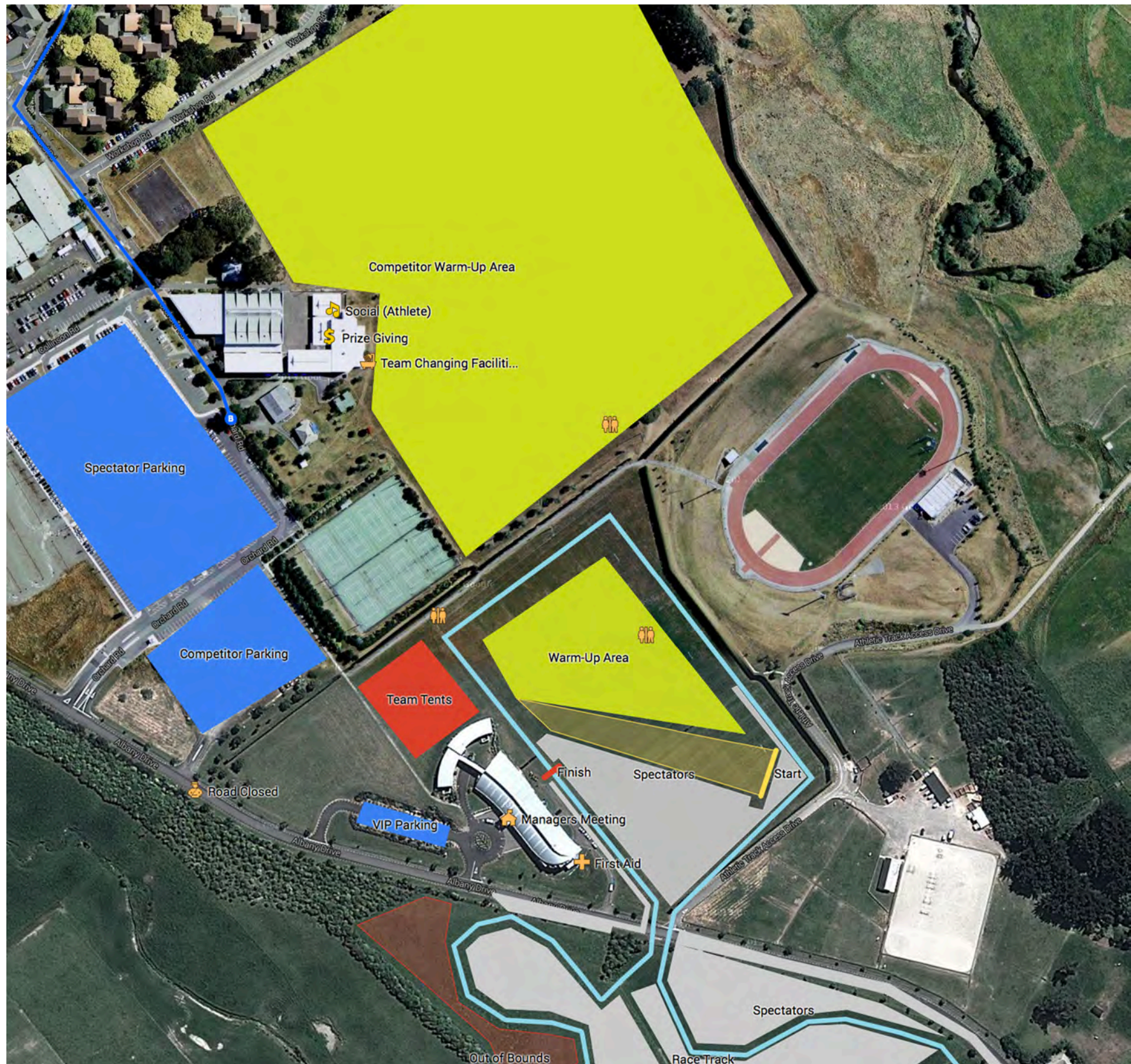
If you do have any general queries, please email hamish.meacheam@sportmanawatu.org.nz

Hamish Meacheam
Chairman
LOC Committee
Manawatu



2014
XC

Race Day Plan



IMPORTANT: All competitors must wear bibs at all times during the race and not alter any part of the bib. Failure to do so will exclude competitors from the results.

Event Schedule:

- 10.00pm PA Combined
- 10.30am Year 9 Girls
- 11.00 am Year 9 Boys
- 11.30 am Junior Girls
- 12.00 pm Junior Boys
- 12.30pm Senior Girls
- 1.00pm Senior Boys
- 4.00pm PRIZE GIVING
- 7.30-10.00pm Competitor Social

Race Format:

Start Procedure: Athlete Call to **START LINE 5 min PRE-RACE.**

Race Configuration:

- 3 km: 1 short lap around rugby fields followed by 1 full lap.
- 4 km: 2 full laps
- 6km: 3 full laps



MASSEY UNIVERSITY
TE KUNENGA KI PŪREHUROA